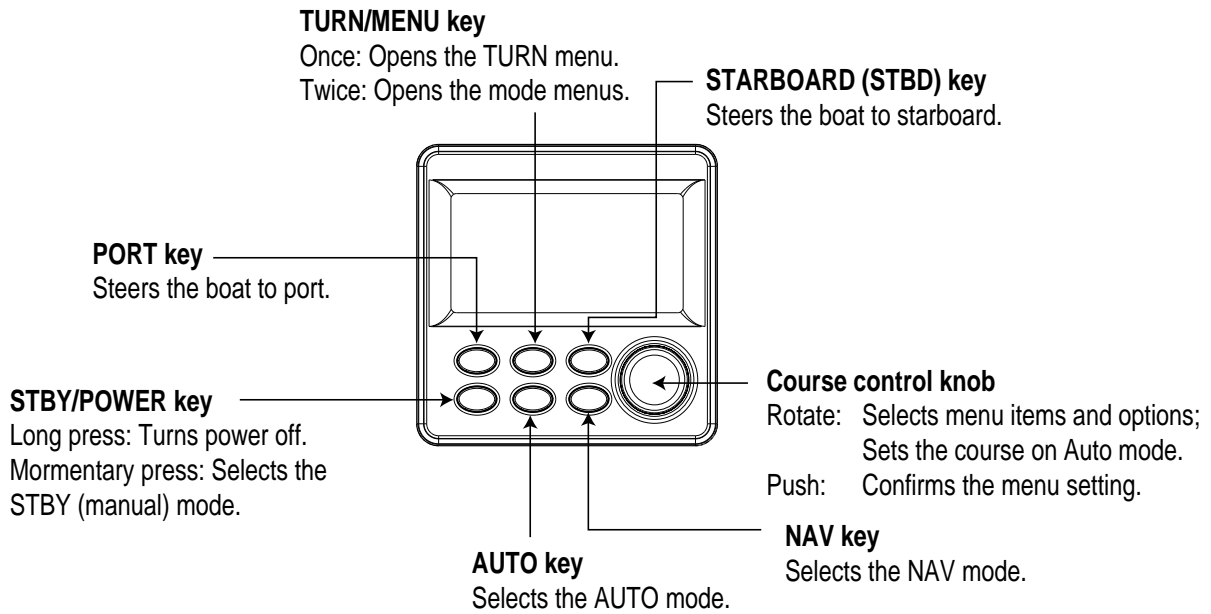


# AUTOPILOT NAVpilot-511

## Operator's Guide

The purpose of this Operator's Guide is to provide basic operating procedures for this equipment. For more detailed information see the Operator's Manual.

### Operating controls

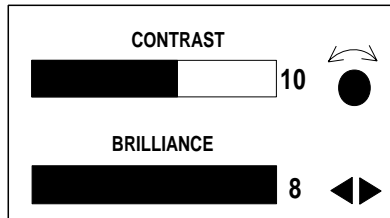


---

## Adjusting Brilliance/Contrast

---

1. Press the [TURN/MENU] key twice to show the main menu.
2. Rotate the course control knob to select CONTRAST/BRILLIANCE, and then press it.



3. Press the [PORT] or [STBD] key for adjusting BRILLIANCE. Rotate the course control knob for adjusting CONTRAST.
4. Press the [TURN/MENU] key twice to close the window.

---

## Steering in STBY mode

---

1. Press the [STBY/POWER] key with a touch-and-release action to go into the STBY mode.
2. Steer the boat with the helm wheel.



---

## Steering in AUTO mode

---

1. Set the boat on the desired course in STBY mode.
2. Press the [AUTO] key to go into the AUTO mode.
3. Rotate the course control knob for fine course adjustment.

The NAVpilot-511 will maintain the boat's heading automatically at the course set. In this mode, the boat may drift due to wind and current.

---

## Steering in ADVANCED AUTO mode

---

1. Connect the NAVpilot-511 to a navaid which output position data.
2. Select "ADVANCED AUTO: ON" from the AUTO mode menu.
3. Operate the NAVpilot-511 as similarly with the AUTO mode.  
ADVANCED AUTO mode maintains set course without deviating from the track.

---

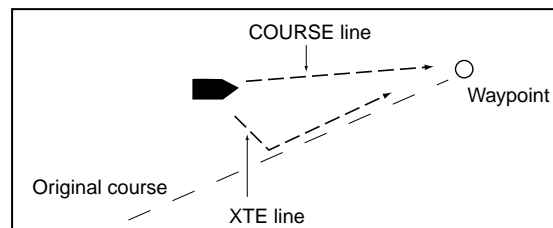
## Set the boat in NAV mode

---

1. Select a destination waypoint on the navigator connected.
2. Manually steer the boat towards the waypoint.
3. Press the [NAV] key to go into the NAV mode.

This mode is used in connection with a navigational aid, such as GPS navigator. In this mode, current and weather will have little affect on the boat's track line.

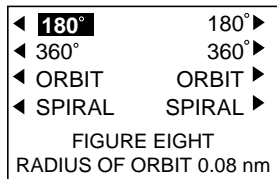
When your vessel goes off course while navigating between the origin (previous waypoint) and your current destination waypoint because of a remote control command, etc. the NAV mode uses one of two methods to get back on course: COURSE or XTE.



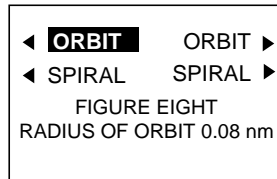
Select the NAV MODE "COURSE" or "XTE" from the NAV mode menu.

## Using the TURN mode

The [TURN] key provides the various turning motions depending on the used mode. The arrows show the direction to turn.



AUTO mode

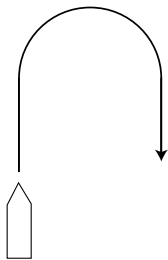


STBY, NAV mode

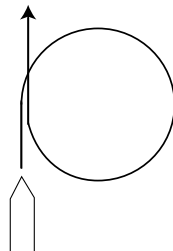
Rotate the course control knob to select turn mode desired, and then press the course control knob.

### 180°/360° (AUTO mode only)

This function changes the current set course 180° or 360°.



180° turn



360° turn

Press the [PORT] or [STBD] key appropriately.

### ORBIT

The boat will orbit around the boat's current position.

### SPIRAL

The boat will spiral in the direction of heading (in STBY mode), set course (in AUTO mode) or the shortest course to the next waypoint (in NAV mode).

## FIGURE EIGHT

After the boat has traveled the distance "d" set on the menu, it starts turning in a figure eight pattern, automatically returning to the position where the figure eight mode was initiated.

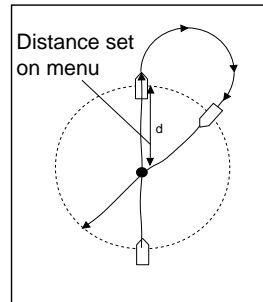
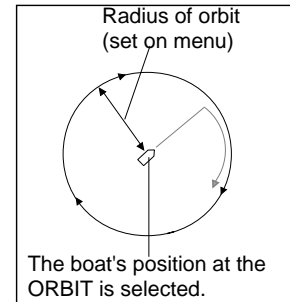
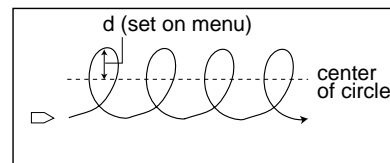


FIGURE EIGHT mode



ORBIT mode



SPIRAL mode

## Dodging

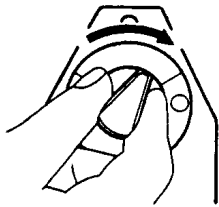
To dodge other boats or obstacles, do the following.

### In AUTO or NAV mode

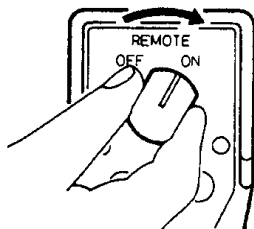
Press the [PORT] or [STBD] key to change the course appropriately until the obstacle has been dodged.

## REMOTE mode

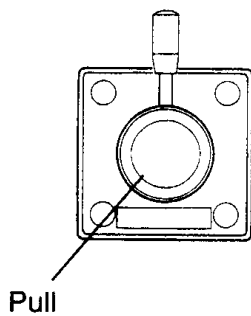
1. Turn on the remote controller switch to show "FU" or "NFU" on the control unit.  
For dodge type, there is no power switch.



*Dial type*



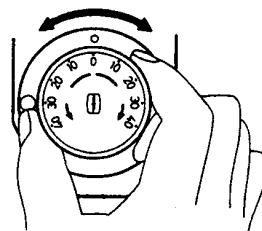
*Button type*



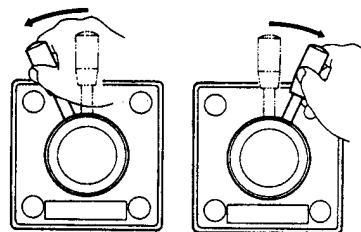
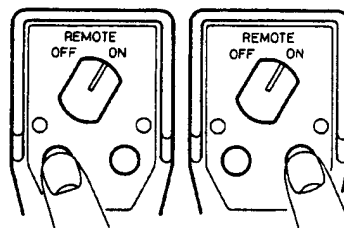
Pull

*Lever type*

2. Steer the boat by using the remote controller.

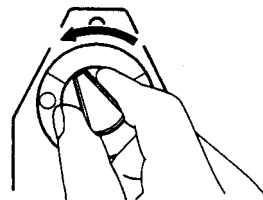


*Dial type*

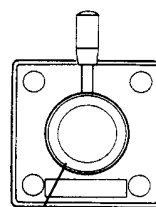
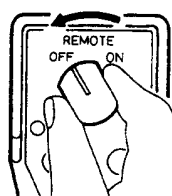


*Button and lever type*

3. Turn off the remote controller switch.



*Dial type*



Push

*Button and lever type*

PUB. No. OSE-72501-A  
(2004/1, HIMA)



\* 00014860400 \*



\* OSE72501A00 \*